

BOOTSTRAPPING SEMANTIC SEGMENTATION WITH REGIONAL CONTRAST

Shikun Liu, Shuaifeng Zhi, Edward Johns, and Andrew J. Davison

ICLR 2022



SEMI-SUPERVISED SEGMENTATION

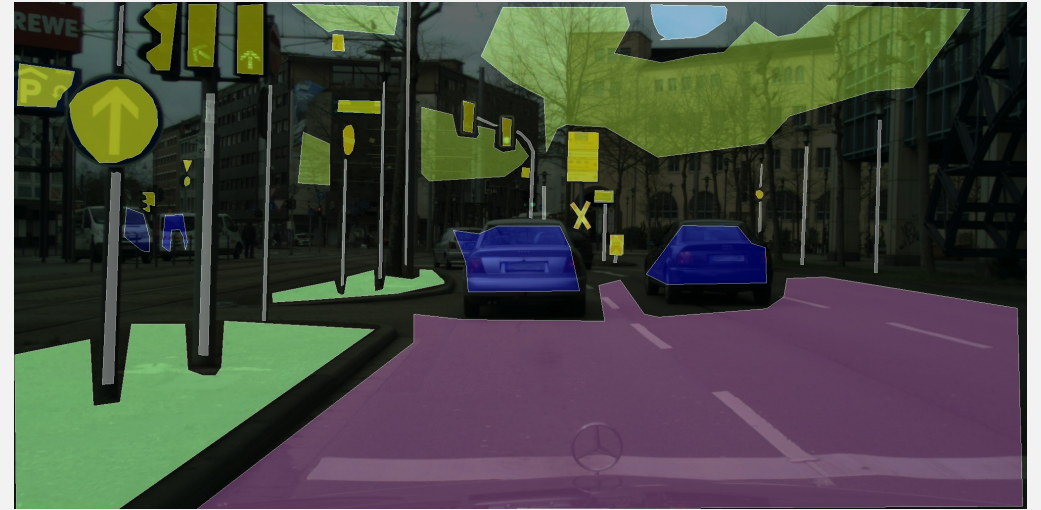
*Annotation and quality control
required more than **90 minutes**
on average for a single image in
Cityscapes dataset.*

SEMI-SUPERVISED SEGMENTATION

- Case 1: Few labelled images. Label information is complete. *(evaluated in prior works)*
- Case 2: Many labelled images. Label information is partial.

PARTIAL LABELLED IMAGES

*Each partially labelled image is asked to correctly annotate as many pixels as possible within a given span of less than **7 mins.***



Ground-Truth



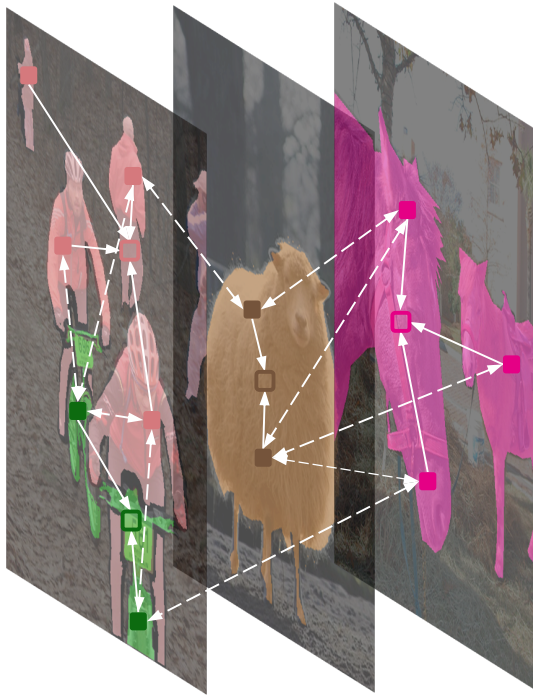
Trained with Supervised Learning
(mIoU 38, Acc. 85+)



LIMITATIONS ON SUPERVISED SEGMENTATION MODELS

- Focus only on local context (in a single image) by convolutional or attention models.
- Cross-entropy loss produces minimal meaningful information.

INTRODUCING RECO [REGIONAL CONTRAST]



Semantic Class

Sampling Distribution

Person

Bicycle

Sheep

Horse

Bicycle

Person

Horse

Sheep

Sheep

Horse

Person

Bicycle

Horse

Sheep

Person

Bicycle

KEY AND QUERY SAMPLING

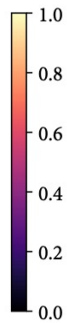
Active Key Sampling

$$G[p, q] = \cos(r_k^{p,+}, r_k^{q,+}), \quad \forall p, q \in \mathcal{C}, \text{ and } p \neq q.$$

Active Query Sampling



(a) Confidence Map



(b) Easy Queries



(c) Hard Queries

RESULTS ON CITYSCAPES (CASE I)

Ground Truth



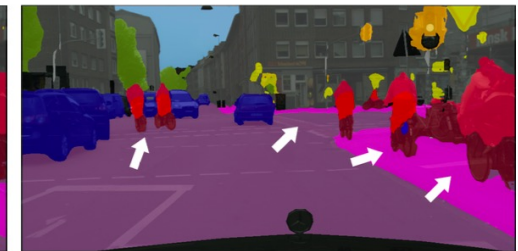
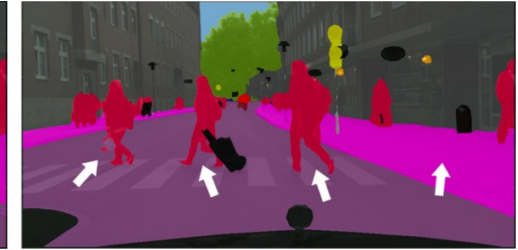
Supervised (20 Labels)



ClassMix (20 Labels)



ReCo + ClassMix (20 Labels)



Road
Sky

Sidewalk
Person

Building
Rider

Wall
Car

Fence
Truck

Pole
Bus

Traffic Light
Train

Traffic Sign
Motorcycle

Vegetation
Bicycle

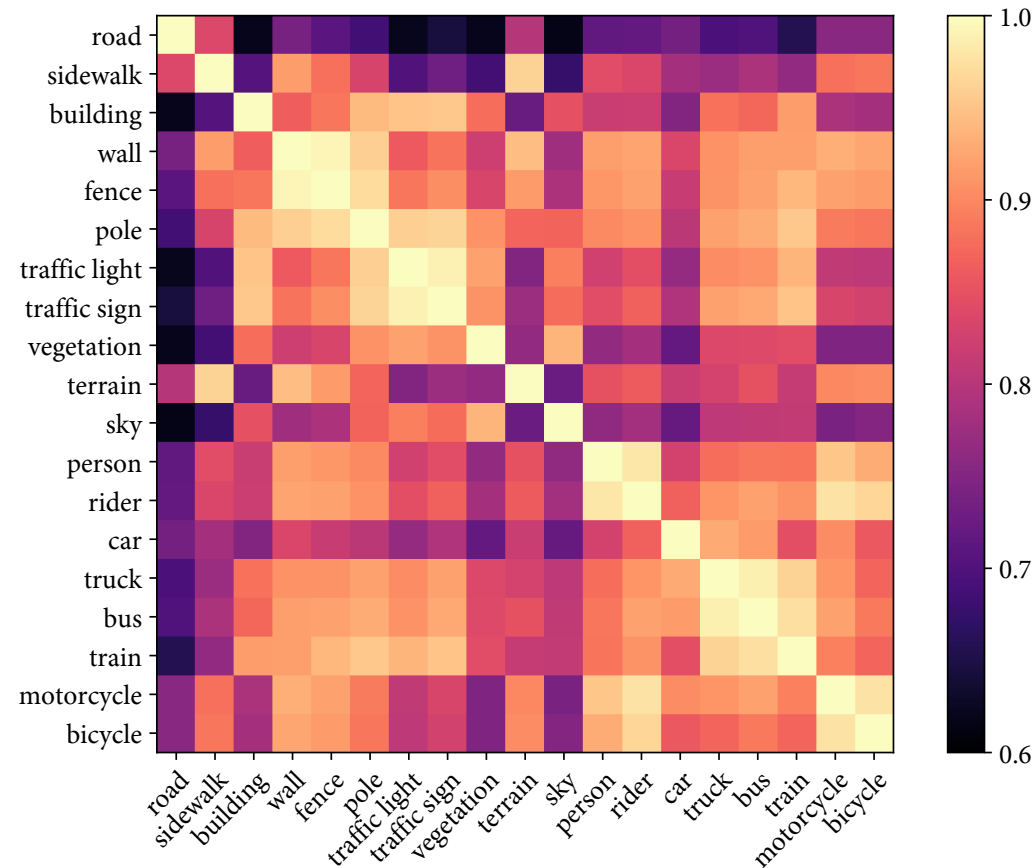
Terrain
Invalid

RESULTS ON PASCAL VOC (CASE 2)

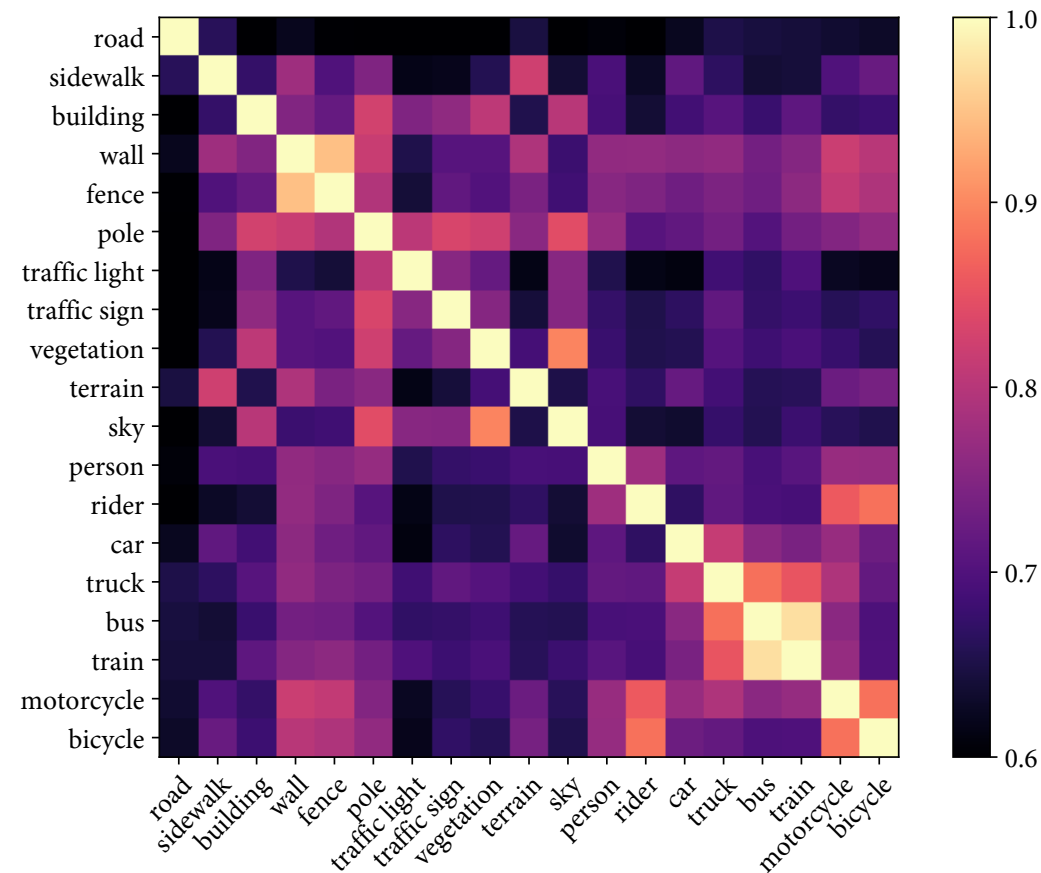


Left: ClassMix; Right: ClassMix + ReCo

Supervised



ReCo + Supervised



INTERPRETABILITY
OF CLASS RELATIONSHIP

THANKS FOR LISTENING!

Project Page:
<https://shikun.io/projects/regional-contrast>